

SOEN

truck print, frontlit & blackout



The worldwide market reference

- Digital printing fabric
- Solvent and UV-curable inks receptive

P9700 // P6819 // P6825 //
P7259 // P7457 // P5600 //
M5550

P9700



9917

300 cm

P6819



9917

300 cm

P6825



9917

300 cm



P7259

Frontlit



P7457

Frontlit

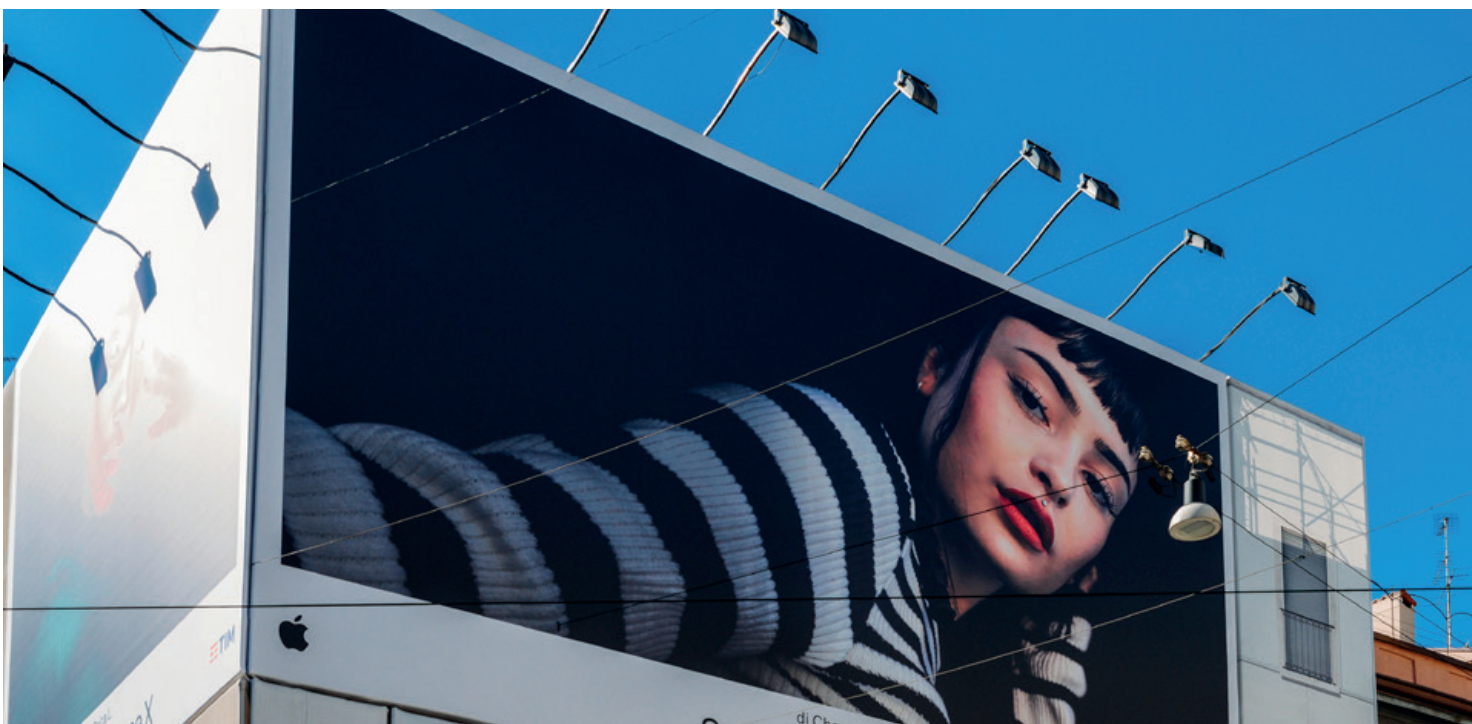


9917

←→ 320 cm

9021

←→ 320 cm



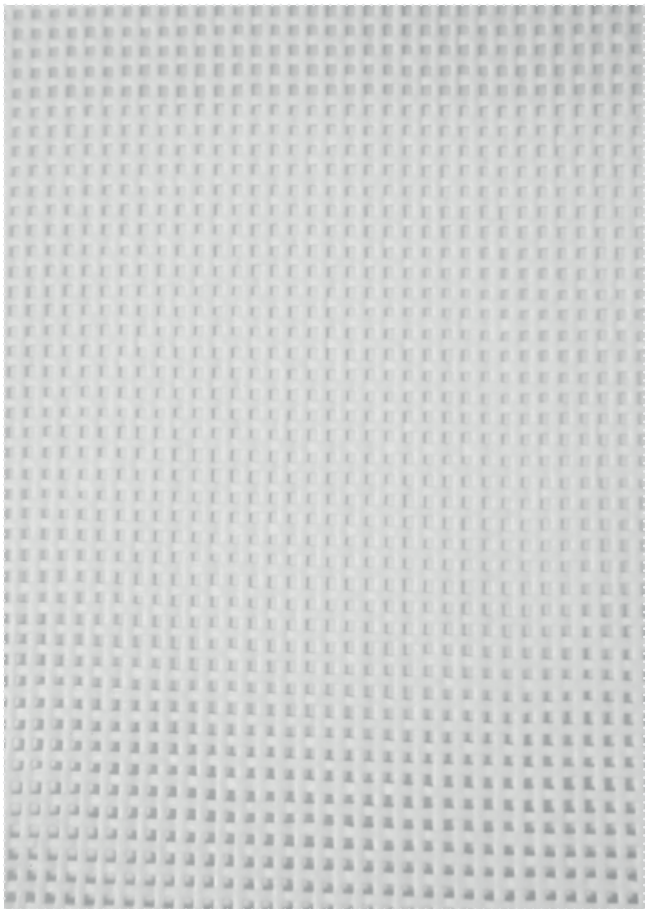
P5600

Block out



M5550

Mesh



9917

320 cm

9917

320 cm



ADVANTAGES

Vorteile // Avantages // Ventajas // Voordelen



Worldwide market reference

Weltweite Marktreferenz
Référence mondiale du marché
Referencia del mercado mundial
Wereldwijde marktreferentie



Digital printing fabric

Digitaldruckgewebe
Toile imprimerie digitale
Tejido de impresión digital
Doek digitale bedrukking



Extremely ink-receptive top lacquers

Extrem tintenaufnehmende
Decklackschicht
Couche supérieure de vernis
réceptif à l'encre
Lacas superiores muy receptivas
a la tinta
Extrem inktabsorberende
toplaklagen



Technical specifications

Technische Daten // Données techniques // Datos técnicos // Technische specificaties

	P9700	P6819	P6825	P7259 Frontlit	P7457 Frontlit	P5600 Block out	M5550 Mesh
Total Weight - DIN ISO 2286/2:1998 Gesamtgewicht - Poids total - Peso total - Totaal gewicht	700 g/m ²	900 g/m ²	900 g/m ²	600 g/m ²	450 g/m ²	650 g/m ²	250 g/m ²
Composition Zusammensetzung - Composition - Composición - Samenstelling	PES + PVC	PES + PVC	PES + PVC	PES + PVC	PES + PVC	PES + PVC	PES + PVC
Fabric (Warp / Weft) - DIN ISO 2060:1994 Gewebe - Tissu - Tejido - Weefsel	PES, 1100 dtex PES, 1100 dtex	PES, 1100 dtex PES, 1100 dtex	PES, 1100 dtex PES, 1100 dtex	PES, 1100 dtex PES, 1100 dtex	PES, 1100 dtex PES, 1100 dtex	PES, 550 dtex PES, 550 dtex	PES, 1100 dtex PES, 1100 dtex
Lacquering Lackierung - Laquage - Tipo lacado - Lacquering	Top: semi dull Bottom: glossy	Top: dull Bottom: dull	Top: glossy Bottom: glossy	Top: semi dull Bottom: glossy	Top: semi dull	Top: semi dull Bottom: glossy	-
Breaking Strength (Warp / Weft) - EN ISO 1421/1:1998 Höchstzugkraft - Résistance rupture - Resistencia urdimbre - Treksterkte	3000 N/5cm 2850 N/5cm	4000 N/5cm 4000 N/5cm	4000 N/5cm 4000 N/5cm	2500 N/5cm 1800 N/5cm	2500 N/5cm 1200 N/5cm	2100 N/5cm 1500 N/5cm	≥ 1825 N/5cm ≥ 1825 N/5cm
Tear Strength (Warp / Weft) - DIN 53363:2003 Weiterreisskraft - Résistance à la déchirure - Resistencia urdimbre - Scheurweerstand	300 N 300 N	600 N 500 N	600 N 500 N	250 N 250 N	250 N 200 N	100 N 100 N	-
Adhesion - EN ISO 2411:2000 Haftung - Adhérence - Adhesión - Hechting	100 N/5cm	100 N/5cm	100 N/5cm	80 N/5cm	70 N/5cm	60 N/5cm	-
Temperature resistance - EN 1876/1:1998 Temperaturbeständigkeit - Tenue à la température - Resistencia térmica - Temperatuurbestendigheid	-40/+70 °C	-40/+70 °C	-40/+70 °C	-40/+70 °C	-40/+70 °C	-40/+70 °C	-30/+70 °C
Light Fastness - ISO 105 B02:2014 Lichtechtheid - Tenue à la lumière - Solidez color - Lichtechtheid	7-8	7-8	7-8	7-8	7-8	7-8	6 - 8
Fire Behaviour - ISO 3795:1989 Brennverhalten - Reaction au feu - Resistencia al fuego - Brandgedrag	< 100 mm/min	< 100 mm/min	< 100 mm/min	< 100 mm/min	< 100 mm/min	< 100 mm/min	(NFP 92 507:2004) M1



Registration,
Evaluation,
Authorization
and restriction
of Chemicals



Sioline PVC fabrics
are recyclable



Slitting (width) on request
Schneiden (Breite) auf Anfrage
Tronçonnage (largeur) sur demande
Cortar (ancho) bajo pedido
Snijden (breedte) op aanvraag

SIOPEN

Textile Solution Provider

Go to www.sioline.com for more information.

Fabriekstraat 23 - 8850 Ardoos - Belgium -

+32 (0) 51 740 900 - info@sioline.com - www.siopen.com



Produced in Belgium & France in ISO 9001:2015 certified plants

All our technical characteristics are indicative. Please note that all information given in this document is intended to be useful and informative and is correct to the best of our knowledge at time of print. No liability can be accepted for inaccuracies or omissions. All Siopen products comply with the Reach Regulation 1907/2006/CE. Last modified: 17 oktober 2023 10:16 a.m.