



Sioen technical textiles for Tensile architecture and façade claddings: Façade element T2



FAÇADE ELEMENT T2

W090721LV

TENSILE ARCHITECTURE, FAÇADE CLADDINGS



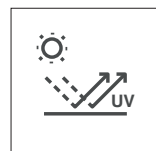
Printable



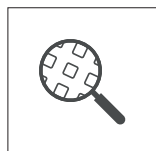
Flame retardant



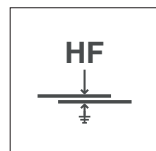
Antibacterial



Excellent UV resistance



In-deep coating technology



Direct HF weldable

Creativity:

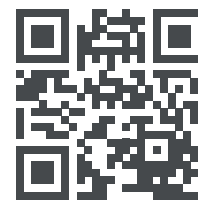
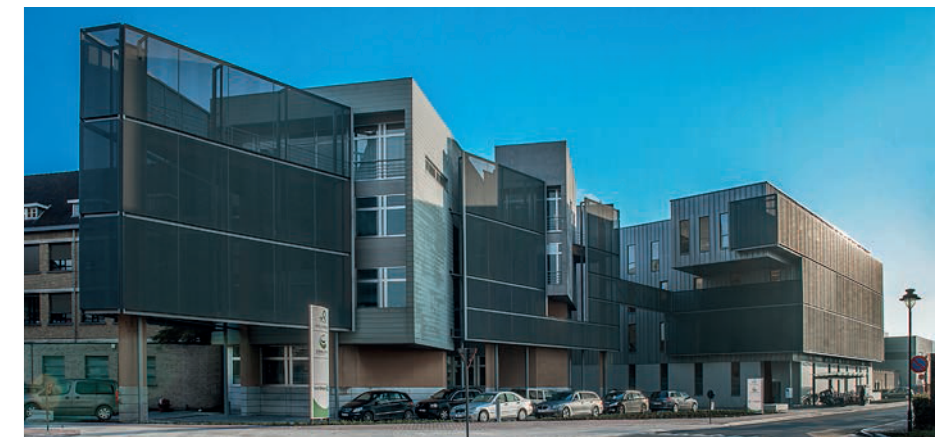
- A large array of colours
- Outstanding metallic range
- Custom colours service to match your RAL colours
- Digital and serigraphic printing on both sides

Durability:

- 12 years warranty
- In deep coating system for the highest durability against external conditions
- Antibacterial and flame retardant

Thermal and visual performances:

- Reduction of environmental impact when used as building second skin
- External thermal and shading control
- Enhance façade lighting effects
- Leading customized see through technology



Check our references



Basic properties

700 g/m²

Total weight DIN ISO 2286/2 1998

1,2 mm

Thickness DIN 5084

22 %

Openess factor NBN EN 14500

Polyester 1670 dtex - Architectural PVC - in deep surface treatment

Composition

300 cm

Roll width

50 lm

Roll length

Sample



12
years
warranty

Key features

- Printable on 2 sides
- Flame retardant
- Antibacterial
- Excellent UV resistance
- In-deep coating technology
- HF weldable

Coating

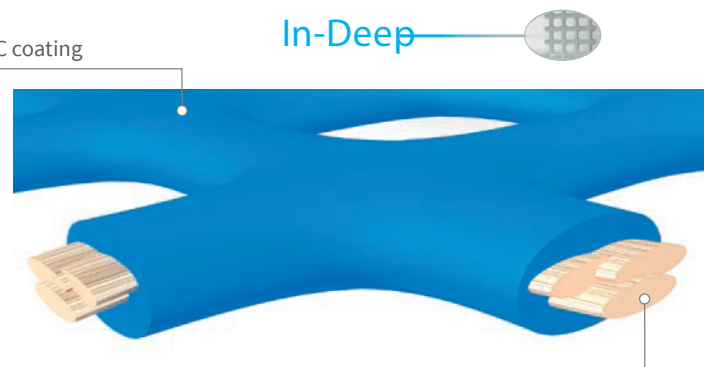
In-Deep Architectural PVC coating

Top coating (3 options):

1. Printable
2. Mat
3. Glossy

Fabric

High tenacity PES yarns



Technical specifications

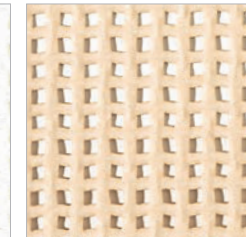
Tensile strength (warp weft)	N/5cm	5000 4000	EN ISO 1421/1 1998
Tear strength (warp weft)	N/5cm	1400 1100	DIN 53363 2003
Adhesion	N/5cm	120	ISO 2411 2000
Temperature resistance		-30/+70 °C	DIN EN 1876/2 1998
Fire resistance	German fire test	B1	DIN 4102
	British fire test	PASS	BS 7837
	American fire test	PASS	NFPA 701
Reaction to fire		PASS	California T19
	Euroclass	B-s2, d0	EN 13501-1 + A1 2009

Available colours

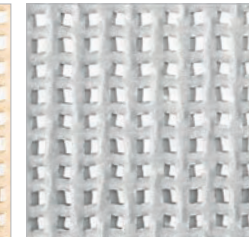
0011 - White



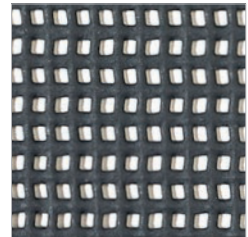
1815 - Sandstone



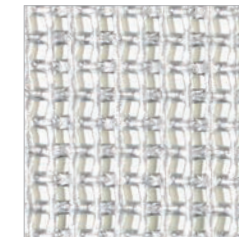
7002 - Grey



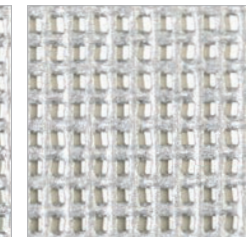
7185 - Anthracite



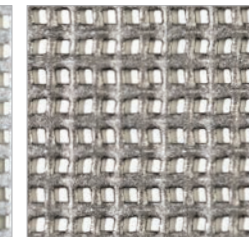
7509 - Silver



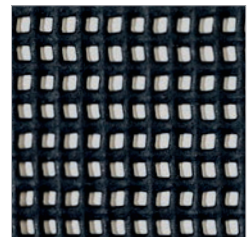
7517 - Aluminium



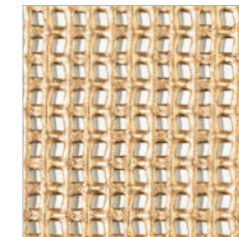
7515 - Dark Silver



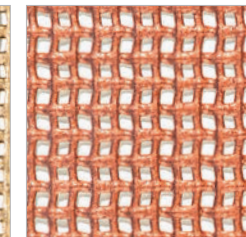
7999 - Black



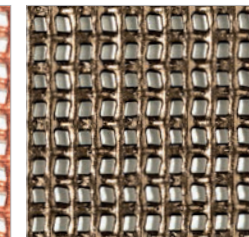
1587 - Champagne



3592 - Copper



8500 - Bronze



1588 - Gold

